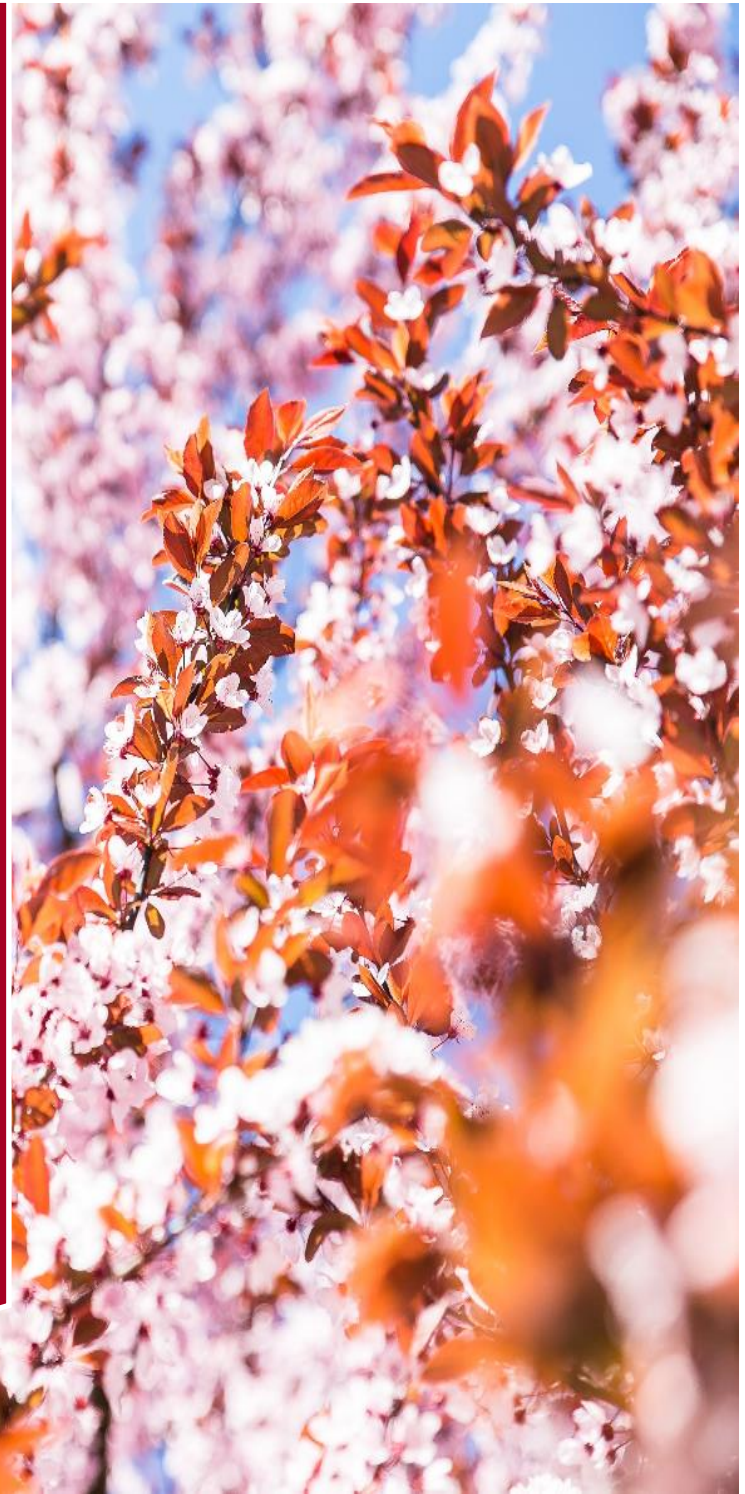


Housing & Residential Education

Retention Support

See our Retention Specialist if you:

- Have questions and need to know where to go or who to contact
- Guidance on direct & indirect cost of living on campus
- Guidance on academic procedures
- Guidance on available campus resources including: academic , financial, student involvement, housing and more
- Schedule one-on-one appointments, call, email, or drop-in to meet
- Visit our blog:
retentionsupporthousing.cikeys.com



**HOUSING &
RESIDENTIAL
EDUCATION**

C H A N N E L
I S L A N D S

Cynthia County

Retention Support Specialist

cynthia.county@csuci.edu

805-437-1658

Housing & Residential Education

Santa Cruz Village , E150